

THE SECOND LARGEST CITY IN NEW ZEALAND IS A GATEWAY TO THE SOUTH ISLAND FOR MANY VISITORS, BUT ITS UNIQUE BLEND OF CHARMING HERITAGE AND HIGH-CALIBRE AMENITIES ALSO MAKE IT AN APPEALING DESTINATION.

»»ACTIVITIES

Trying to fit everything in will be the hardest part of your stay in Christchurch – you may well find yourself extending your visit!

The best place to start your Christchurch experience is in the central city, because no visit is complete without exploring the architecture, art and heritage of the Cultural Precinct. An example of clever city planning, the corner of the city anchored around the western end of Worcester Boulevard was devised way back in the nineteenth century as a hotbed of learning and culture. Whether you're exploring the renowned Canterbury Museum or shopping for unique gifts at the Arts Centre, this is an essential stop.

Other ways to absorb the historic and quintessentially English side of Christchurch include:

- Taking a punt ride on the River Avon
- Riding on a restored tram around the central city circuit (you can even have dinner on board)
- Visiting the iconic ChristChurch Cathedral – climb up the spire for views over Cathedral Square
- Exploring the cobbled laneways of Lichfield Lanes and South of Lichfield – the perfect way to combine shopping, dining and heritage!

Although well known for its European character, Christchurch is also home to a rich Maori heritage. In centuries past successive tribes vied for control of a region offering abundant food in its swamps and along its coastline, and forming an essential link in the trade of West Coast pounamu (greenstone). Explore Maori culture by experiencing the following:

- Watch a stirring Maori cultural performance and participate in a haka or poi dance

- Learn the art of paddling a Maori waka
- Visit a replica Maori village for an insight into the traditional way of life

In more recent times, Christchurch has established a reputation as the epicentre of a region offering an astonishing variety of outdoor activities – from the relaxing to the adrenaline-pumping – courtesy of the varied landscape surrounding the city. Some of the most popular include:

- Skiing and snowboarding in winter (there are ten ski areas in the Canterbury region!)
- Mountain biking and hiking in the Port Hills against a magnificent backdrop of Lyttelton Harbour, Pegasus Bay, the Canterbury Plains and the Southern Alps
- Jet boating or white water rafting on one of several braided rivers that cut across the Plains from the mountains to the sea

In and around the city you'll also find a wide variety of iconic attractions that form an essential part of every traveller's must-do list. And, if you're travelling with family, there are plenty of great options to keep children amused:

- Ride the Christchurch Gondola to the top of the Port Hills for superb views – there's a restaurant at the top too
- Take the children to one of Christchurch's renowned wildlife parks, such as Willowbank Wildlife Reserve or Orana Park
- Catch the TranzAlpine for a spectacular rail journey across the Canterbury Plains and through the Southern Alps to the West Coast
- Visit The Antarctic Attraction for a fascinating insight into the Southern Continent – did you know that Christchurch is the gateway for Antarctic expeditions?



Christchurch's SOI Square
Christchurch & Canterbury Marketing

»» Christchurch & Canterbury



A HERITAGE-PACKED CITY CENTRE WITH NEO-GOTHIC STONE BUILDINGS, QUIANT TRAMS AND PUNTS PLYING THE RIVER AVON.

HOME TO SOME OF THE FINEST PARKS AND GARDENS IN NEW ZEALAND, EARNING IT THE TITLE OF THE 'GARDEN CITY'.

EXCELLENT SHOPPING AND DINING (INCLUDING A VIBRANT NIGHTLIFE) IN A NUMBER OF DISTINCT PRECINCTS AROUND THE CITY.

EASY ACCESS TO A MYRIAD OF OUTDOOR ADVENTURES – FROM HIKING, MOUNTAIN BIKING AND GOLFING TO JET BOATING AND SKIING.

»»DINING & DRINKING

Christchurch has a well-established reputation as a great destination for lovers of fine food – the city is home to dozens of eateries covering everything from fine dining to casual cafés, as well as ethnic restaurants representing an astonishing variety of cultures. Oxford Terrace (also known as The Strip) in the heart of the city is a great place for lunch or dinner alfresco, but other must-try dining precincts are Victoria Street, a stylish part of town that’s home to Christchurch Casino, and the Lichfield Lanes/South of Lichfield area, where little lanes are crammed full of intriguing restaurants and bars. For more information on these and other popular dining areas, get yourself a copy of Brown Bear Indulge.

»»GETTING THERE & AROUND

With a compact central city area, and lots of enticing laneways and gardens to discover, exploring on foot is the best option for most visitors. Take your time wandering around the Botanical Gardens, and through the Cultural Precinct up to Cathedral Square, or join a guided walking tour for insights from a local expert.

If you need to rest your feet, catch a free city Shuttle bus (these bright yellow electric buses operate on a central city circuit every 10 minutes throughout the day and into the evening). Another option is the Christchurch Tramway, which offers a hop-on, hop-off service around the Cultural Precinct, or rent a bicycle to cruise around Hagley Park and down Fendalton Road to Mona Vale. For travel outside the central city, Red Bus operates an excellent network of bus transport including services to Sumner, Lyttelton and to Christchurch International Airport (the City Flyer). Taxi

services are also readily available, or you may prefer to rent a vehicle from one of the city’s many car rental operators.

- **Red Bus** – for information on the City Flyer Airport Bus, Free Shuttle and Metro bus services, phone 03 366 8855 (www.metroinfo.org.nz).
- **Christchurch Tramway** – phone 03 366 7830 (www.tram.co.nz).
- **Taxis** – some well-established operators are Blue Star Taxis (phone 03 379 9799), Corporate Cabs (phone 03 379 5888) and Gold Band Taxis (phone 03 379 5795).

»»QUICK REFERENCE

- **Christchurch International Airport** – gateway to the South Island – offers scheduled domestic and international flights from a wide range of destinations, as well as charter flights to smaller centres.
- **Christchurch International Airport** is located 12 km northwest of central Christchurch – a drive of approximately 20 minutes. Taxi, shuttle and bus services are available.
- **Main regional centres** include Christchurch, Akaroa, Arthur’s Pass, Rangiora, Kaiapoi, Oxford and Darfield.

»»i-SITE VISITOR CENTRES

CHRISTCHURCH AIRPORT
Domestic Terminal & International Terminal
ph 03 353 7774

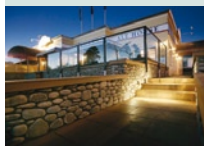
CHRISTCHURCH CENTRAL
Old Chief Post Office, Cathedral Square, ph 03 379 9629

ONLINE VISITOR INFORMATION
www.christchurchnz.com



Bealey’s Hotel »Hotel

Exceptionally priced, fully serviced accommodation with 24 hour reception. Features NZ’s best Hotel & Restaurant Re-development 2006. Great central location, friendly and unpretentious.



263 Bealey Ave
Christchurch
Ph: +64 3 379 8660 Fax: +64 3 366 9973
Email: info@bealeyshotel.co.nz
www.bealeyshotel.co.nz
www.speights-alehouse.co.nz

Camelot Cathedral Square Hotel »Hotel

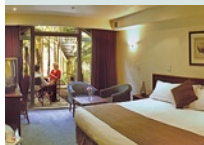
Exceptional, affordable accommodation in the heart of Christchurch. European-style hotel just a short stroll to the Botanic Gardens, Arts Centre, Town Hall, Casino, tram and shopping.



66 Cathedral Sq
Christchurch
Ph: +64 3 365 2898 Fax: +64 3 379 2388
NZ Freephone: 0800 258 858
Email: camelot.cathedral@xtra.co.nz
www.thecamelot.co.nz

Chateau on the Park »Hotel

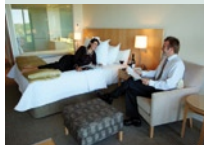
Chateau on the Park is a city resort styled hotel set on two hectares of beautiful gardens beside Hagley Park in Christchurch.



Cnr Deans Ave & Kilmarnock St
Christchurch
Ph: +64 3 348 8999
NZ Freephone: 0800 808 999
Email: res@chateau-park.co.nz
www.chateau-park.co.nz

Copthorne Hotel Commodore, Christchurch Airport »Hotel

The Commodore is just three minutes from the airport and ten minutes from the city centre. 137 guest accommodation rooms. Indoor swimming pool, spa, sauna and gymnasium.



449 Memorial Ave
Christchurch
Ph: +64 3 358 8129 Fax: +64 3 358 2231
NZ Freephone: 0800 266 663
Email: reservations@commodore.net.nz
www.commodore.net.nz



Elms Hotel »Hotel

A great place to stay, 10 minutes from town and airport. 24-hour reception. Mention this ad for a special deal.



456 Papanui Rd
Christchurch
Ph: +64 3 355 3577 Fax: +64 3 352 0290
NZ Freephone: 0800 109 910
Email: reservations@elmshotel.co.nz
www.elmshotel.co.nz



Heritage Christchurch »Hotel

Historic hotel offering luxurious suites in the restored Old Government Building or contemporary rooms in the Tower Wing. Heated pool, spa, sauna, gym, and restaurant.



28 – 30 Cathedral Sq
Christchurch
Ph: +64 3 377 9722 Fax: +64 3 377 9881
NZ Freephone: 0800 936 936
Email: res.heritagechc@heritagehotels.co.nz
www.heritagehotels.co.nz



Holiday Inn City Centre Christchurch

Hotel

Close to shops, nightlife, sightseeing and the CBD. Many rooms with panoramic views of the city, Port Hills and Southern Alps. Restaurant/bar, gym, internet, laundry and parking.



Cnr Cashel St & High St
Christchurch
Ph: +64 3 365 8888 Fax: +64 3 364 5143
NZ Freephone: 0800 801 111
Email: resmgr@hicitycentrechristchurch.co.nz
www.holidayinn.co.nz



Holiday Inn on Avon

Hotel

Nestled on the banks of the River Avon on the edge of the CBD, experience tranquillity, peace, and the genuine warmth of our team. Restaurant, gym, internet, pool and sauna.



356 Oxford Tce
Christchurch
Ph: +64 3 379 1180
Fax: +64 3 366 7590
Email: reservations@holidayinnonavon.co.nz
www.holidayinn.co.nz



Latimer Hotel

Hotel

Inner city hotel and apartments overlooking the park. A quiet retreat just a few minutes walk to central Christchurch entertainment and shopping.



30 Latimer Sq
Christchurch
Ph: +64 3 379 6760 Fax: +64 3 366 0133
NZ Freephone: 0800 176 176
Email: stay@latimerhotel.co.nz
www.latimerhotel.co.nz



Peppers Clearwater Resort

Hotel

Stay in waterfront accommodation within 465 acres of manicured landscape. Championship golf course, tennis courts, walking trails and fly fishing.



Clearwater Ave, Harewood
Christchurch
Ph: +64 3 360 1000
Fax: +64 3 360 1001
Email: clearwater@peppers.co.nz
www.peppers.co.nz



The Charlotte Jane

Hotel

Discover the charm of this boutique hotel with its 19th Century surroundings. The Charlotte Jane is ideal for discerning guests seeking an alternative to large hotels.



110 Papanui Rd
Christchurch
Ph: +64 3 355 1028
Fax: +64 3 355 8882
Email: office@charlotte-jane.co.nz
www.charlotte-jane.co.nz



The Garden Hotel & Restaurant

Hotel

Renovated accommodation, two restaurants, sports bar, swimming pool. 15 minutes from airport. Affordable prices, great location! Free continental breakfast with this advertisement.



110 Marshlands Rd, Shirley
Christchurch
Ph: +64 3 385 3132 Fax: +64 3 385 3888
NZ Freephone: 0800 009 898
Email: enquiries@gardenhotel.co.nz
www.gardenhotel.co.nz