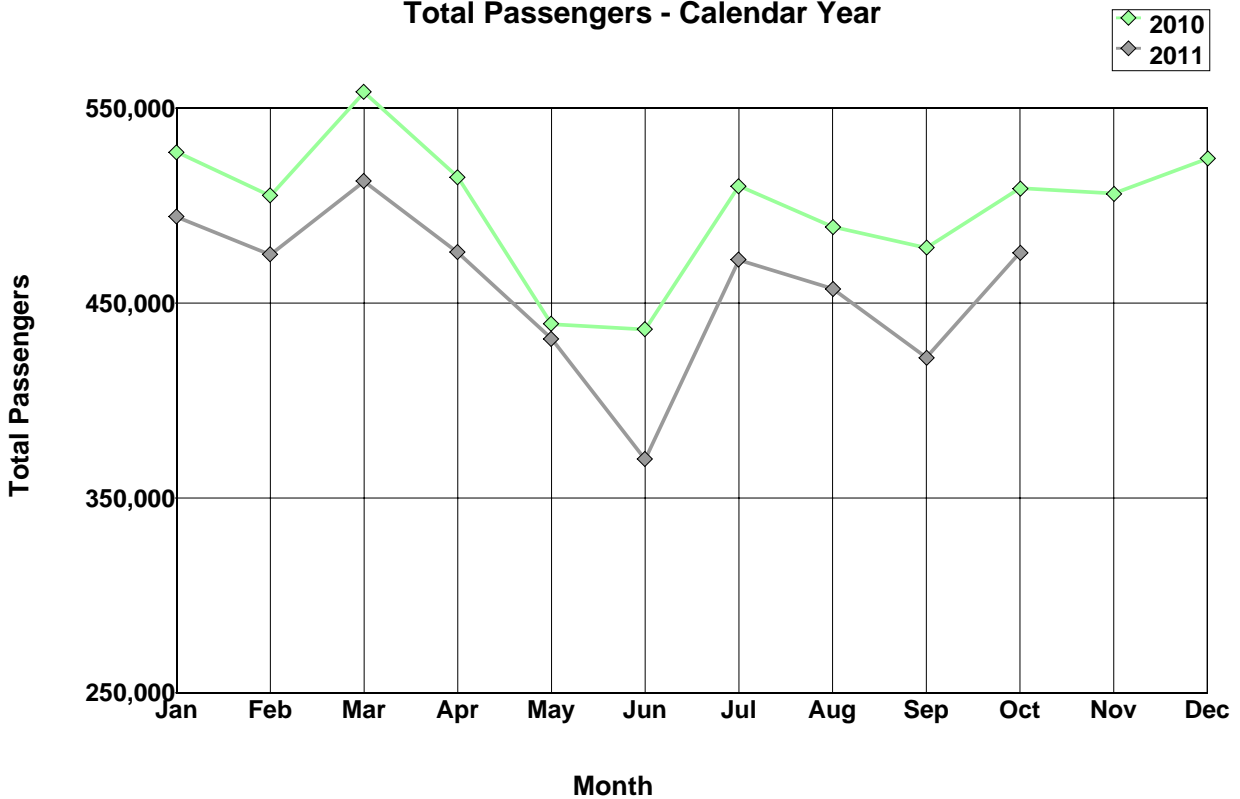


Total Passengers

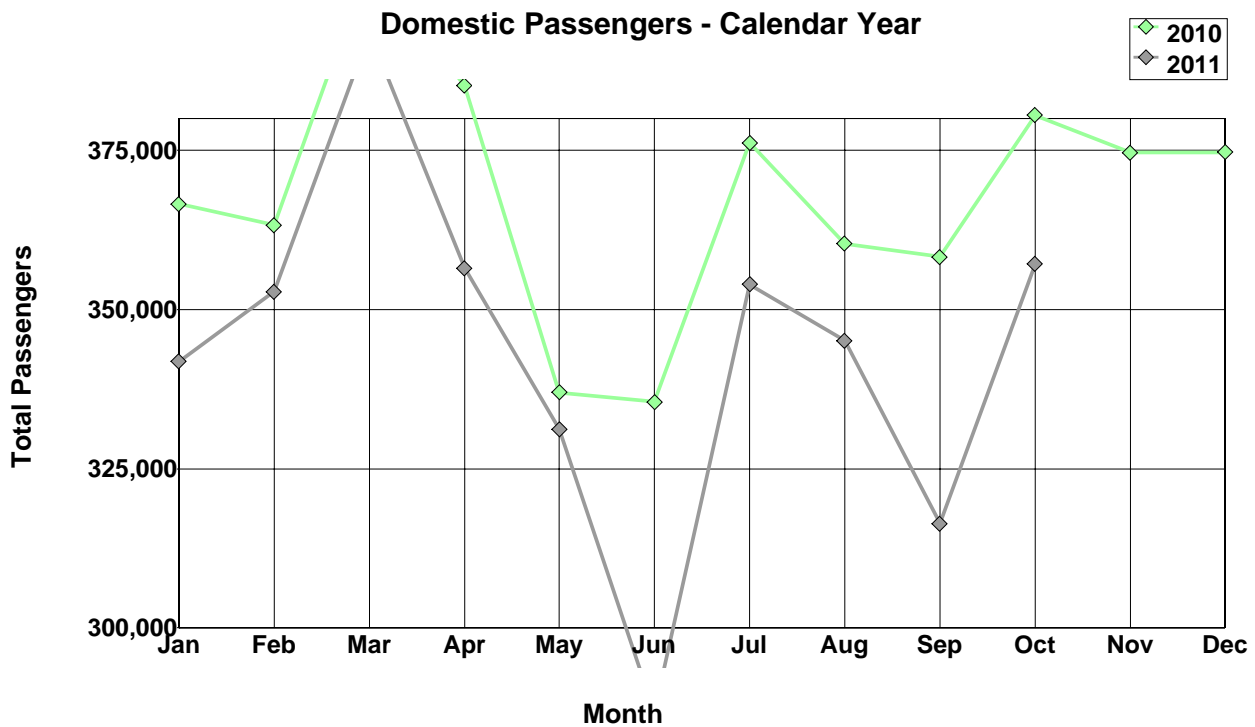
	2010			2011		
	Arr	Dep	Total	Arr	Dep	Total
Jan	257,625	269,787	527,412	244,036	250,320	494,356
Feb	254,197	250,973	505,170	230,410	244,488	474,898
Mar	270,245	288,055	558,300	246,458	265,952	512,410
Apr	249,306	265,397	514,703	233,551	242,524	476,075
May	212,560	226,502	439,062	211,677	219,993	431,670
Jun	217,130	219,416	436,546	181,142	188,716	369,858
Jul	257,041	252,891	509,932	236,855	235,267	472,122
Aug	243,644	245,336	488,980	230,495	226,700	457,195
Sep	240,318	237,970	478,288	215,342	206,539	421,881
Oct	256,554	252,340	508,894	237,917	237,895	475,812
Nov	253,845	252,300	506,145			
Dec	264,993	259,201	524,194			
Total	2,977,458	3,020,168	5,997,626	2,267,883	2,318,394	4,586,277

Total Passengers - Calendar Year



Domestic

	2010			2011			
	Arr	Dep	Total	Arr	Dep	Total	
Jan	178,877	187,693	366,570	169,530	172,288	341,818	
Feb	180,425	182,823	363,248	168,689	184,109	352,798	
Mar	197,841	207,085	404,926	195,310	198,253	393,563	**
Apr	186,781	198,365	385,146	175,339	181,172	356,511	
May	165,112	171,853	336,965	164,786	166,450	331,236	
Jun	165,145	170,359	335,504	141,178	145,606	286,784	
Jul	188,658	187,518	376,176	178,831	175,096	353,927	++
Aug	177,669	182,671	360,340	172,117	172,999	345,116	
Sep	178,004	180,287	358,291	158,056	158,361	316,417	
Oct	189,088	191,424	380,512	177,843	179,333	357,176	
Nov	185,406	189,210	374,616				
Dec	185,573	189,120	374,693				
Total	2,178,579	2,238,408	4,416,987	1,701,679	1,733,667	3,435,346	



Source: Apollo

International

	2010			2011		
	Arr	Dep	Total	Arr	Dep	Total
Jan	78,748	82,094	160,842	74,506	78,032	152,538
Feb	73,772	68,150	141,922	61,721	60,379	122,100
Mar	72,404	80,970	153,374	51,148	67,699	118,847
Apr	62,525	67,032	129,557	58,212	61,352	119,564
May	47,448	54,649	102,097	46,891	53,543	100,434
Jun	51,985	49,057	101,042	39,964	43,110	83,074
Jul	68,383	65,373	133,756	58,024	60,171	118,195
Aug	65,975	62,665	128,640	58,378	53,701	112,079
Sep	62,314	57,683	119,997	57,286	48,178	105,464
Oct	67,466	60,916	128,382	60,074	58,562	118,636
Nov	68,439	63,090	131,529			
Dec	79,420	70,081	149,501			
Total	798,879	781,760	1,580,639	566,204	584,727	1,150,931

International Passengers - Calendar Year

